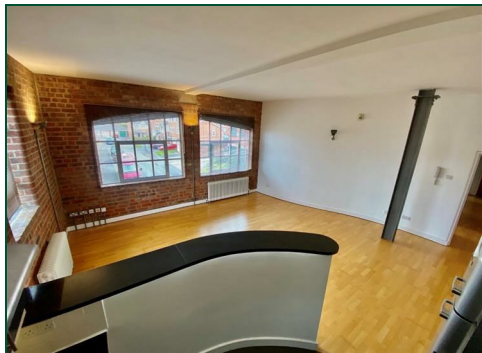




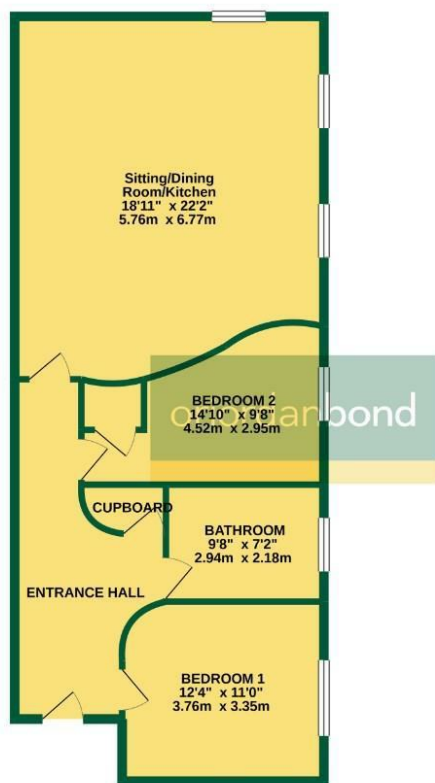
# Flat 3 Webbs Factory Brockton Street

Kingsthorpe Hollow, Northampton

oriordanbond



GROUND FLOOR  
859 sq.ft. (79.8 sq.m.) approx.



TOTAL FLOOR AREA: 859 sq.ft. (79.8 sq.m.) approx.  
Whilst every attempt has been made to ensure the accuracy of the floorplan contained here, measurements of doors, windows, rooms and any other items are approximate and no responsibility is taken for any error, omission or misstatement. This plan is for illustrative purposes only and should be used as such by any prospective purchaser. The services, systems and appliances shown have not been tested and no guarantee as to their operability or efficiency can be given.  
Made with Metropix ©2021.

## Flat 3 Webb's Factory Brockton Street

Kingsthorpe Hollow

Northampton NN2 6HA

PRICE £194,995

**A first floor apartment situated within the prestigious, and highly sought after 'Webb's Factory' development located within walking distance to the Northampton Train station.**

The accommodation in brief comprises communal entrance with intercom system, entrance hall, master bedroom with built in wardrobes, four piece bathroom suite, second double bedroom with built in cupboard and an open plan kitchen and living area with exposed brick walls, granite work tops, built in appliances. Further benefits include gas radiator heating, factory style double glazed windows, secure allocated parking, hard wood flooring and use of a communal gym. (A/796/-)

### Additional information

- Council Tax Band:
- Energy Efficiency Rating: C

### Viewing

Viewing strictly by appointment – details below

### Disclaimer

O'Riordan Bond Estate Agents Limited has not tested apparatus, equipment, fittings or services and so cannot verify they are in working order. The buyer is advised to obtain verification from their solicitor or surveyor.

O'Riordan Bond Kingsthorpe Sales

01604 722007

kingsthorpe@oriordanbond.co.uk